

Linz 09

On the following pages an overview of Linz is presented with its famous sights as well as projects that are initiated in the context of the Linz 09 European Capital of Culture. The program is subject to alterations.

1) Projects Linz 09

Please also have a look at the full program of Linz 09: <http://www.linz09.at/en/projektliste.html>

Overview of some interesting projects at the time of FPSAC:

- **80+1:** A journey around the world; <http://www.linz09.at/en/projekt-2106338/801.html>
- **Growing Union – Europe's Plant Life:** The Botanical Gardens put on a European garden show; http://www.linz09.at/en/projekt-2106417/growing_union_europa_botanisch.html
- **Höhenrausch:** From the crowded spaces of the inner city you are transported to an attractive high plateau; <http://www.linz09.at/en/projekt-2106418/hoehenrausch.html>
- **Just Passing Through:** An exhibition at the Stifter Haus presents observations on Linz by celebrities past and present; http://www.linz09.at/en/projekt-2106367/nur_durchgereist.html
- **Pflasterspektakel:** International Linz street art festival with Street Art College; <http://www.linz09.at/en/projekt-2106406/pflasterspektakel.html>
- **Admidst Us:** The story of Linz's bridgehead buildings in the Nazi era is confronted by Admidst Us, an installation; http://www.linz09.at/en/projekt-2177243/unter_uns.html

2) Sightseeing

a) Guided tour through the city

- **Personal guided tour** in various languages, duration: up to 3 hours (<http://linz.at/english/tourism/1043.asp>)
- **Linz City Express** (Panorama Sightseeing Train), duration: 30 minutes (<http://www.linz.at/english/tourism/841.asp>)
- **Segway City Tour** (KulTour, NaTour, BergTour), duration: about 3 hours including initial training (<http://www.linzerschweben.at/Site/index.html>)

b) (Historical) Buildings

- Old Town Hall

This edifice dates from 1513/1514 and was newly built by Meister Christoph following a town fire. The core of the building attained its present appearance in the course of an enlargement (1658/59). During the 19th and 20th centuries, the adjacent houses were purchased and structurally integrated in the period from 1993 to 1999. The building has stylistic elements ranging from the Gothic and Renaissance to the Baroque and the contemporary. There are lanes running from the Hauptplatz to the Pfarrplatz and from the Rathausgasse to the Pfarrgasse. The building is the seat of the city council and the central administration of the city. It houses an attractive arcade courtyard with a restaurant and the Linz-Genesis museum, which focuses on city history.



Opening hours of the Genesis museum:

Monday - Friday 9 am to 1 pm and 2 pm to 9 pm

Closed on the weekend

- New Town Hall

The New Town Hall contains a large model of the city of Linz and is located opposite the Ars Electronica Center at the north end of the Nibelungenbrücke. This part of the city (Alturfahr) was once a fishing village, but today the district is an open invitation to a stroll, with its delightful bars, street cafés and shops.



- Linz Castle



The Linz castle is first documented in 799. It was entirely rebuilt in 1477 by Emperor Friedrich III, and there are partial remains of the defensive walls, the bastions and the west entrance (*Friedrichstor*). Around 1600, during the rule of Rudolph II, the castle was redesigned and expanded according to plans by the Dutch master builder Anton Muys. The powerful four-storey block with two inner courtyards and the main gate to the city (*Rudolfstor* 1604) date from this time. During the Napoleonic wars the building served as a military hospital, and it was here that the great city fire of 1800 broke out (destruction of the south wing and a part of the transept). Between 1953 and 1963, the fortress was rebuilt and restored as the Upper Austrian Castle Museum.

Castle Museum: The building accommodates the cultural studies collections of the Upper Austrian Provincial Museums (art from the Middle Ages to the modern period: gothic art, 19th century paintings, and applied art, as well as historical music instruments, numismatics, folklore, technology history and archaeology).

The Castle Museum of Linz represents the special cultural-property archive of the province of Upper Austria and is the scene of multifaceted regional-studies research in the humanities

Opening hours:

Tuesday, Wednesday, Thursday, Friday 9 am to 6 pm

Saturday, Sunday, Holidays 10 am to 5 pm

Closed on Monday

- Theatre

The provincial Theatre is an impressive building that replaced the riding school destroyed in the city fire of 1800. Today it houses the Large Theatre and the chamber Theatre, where operas, musicals and plays are performed, appropriate accompanied by the famous Bruckner Orchestra.

- Cathedral Church (*Alter Dom*)

Constructed by the Jesuits in 1669-78 and designed by Pietro Francesco Carlone, the church was dedicated to St. Ignatius, founder of the Jesuit order.

The Ignatiuskirche became the cathedral of Linz in 1785 and fulfilled that role until 1909. Famed composer Anton Bruckner was the cathedral organist for over a decade (1856-1868). The *Alter Dom* has a fairly simple exterior with onion-dome-topped twin towers. The interior has the usual Baroque excesses - pink marble columns, intricately carved pulpit, lots of statues. The high altar by Colomba and Barberini overflows with marble sculptures; the altar painting is by Antonio Bellucci.

**Opening hours:**

daily 7 am to 7 pm

- Cathedral Church (*Neuer Dom*)

The first stone was laid in 1862, and in 1924 the Bishop consecrated the finished building as the Cathedral of the Virgin Mary (*Mariendom*). The plans, drawn by the Master Builder Vincenz Statz, were made in the French high gothic style.

With 20,000 seats, the cathedral is the largest, but not the highest, church in Austria. The originally-planned, higher spire was not approved, because in Austria-Hungary at the time, no building was allowed to be taller than the South Tower of the St. Stephen's Cathedral in Vienna. At 135 m, the New Cathedral is two meters shorter than the Viennese cathedral.

Opening hours:

Monday - Saturday 7:30 am to 7 pm

Sunday 8 am to 7 pm

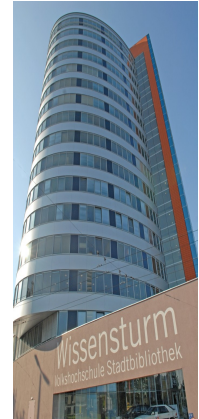
- Brucknerhaus



Built to plans by the Finnish architect Heikki Siren, the Brucknerhaus has been the symbol of Linz since it was opened in 1974 by Herbert von Karajan. The famous concert hall's *Bruckner Festival* and *Klassisch Anderen* programme present an audience of all ages with a cross-section of a wide variety of musical styles performed by top rank artists from around the world.

- Knowledge Tower (Wissensturm)

Directly next to the railway station, the Knowledge Tower, 63 m high, was opened in 2007 and houses an adult education centre, the municipal library and other knowledge organisations under one roof.

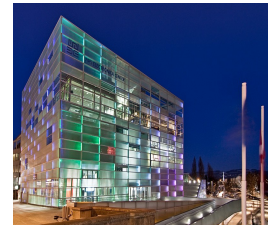


c) Museums

-Ars Electronica Center

The "Ars Electronica Center - Museum of the future" is the leading museum of digital art and media art. Opened in 1996, the center presents computer art on a 2000 sqm area.

The Ars Electronica Center opened as a prototype of a "Museum of the Future." Its mission is to utilize interactive forms of mediation to facilitate the general public's encounter with virtual reality, digital networks and modern media. A focus on issues at the interface of media art, new technologies and social developments characterize the Center's innovative exhibitions. Beyond this, the Ars Electronica Center is the permanent base and thus the organizational foundation of Ars Electronica's regional and international activities.



Opening hours:

Tuesday, Wednesday, Friday 9 am to 5 pm

Saturday, Sunday 10 am to 6 pm

Closed on Monday

- Lentos



As the successor of the New Gallery of Linz, the Lentos Art Museum, which opened in May 2003, is among the most important museums of modern art in Austria. The clear and coherent structural design, created by the Zurich architects Weber & Hofer, provides Linz with a museum of art of international status, positioned in the urban context. The internationally

acclaimed 130 meter long building provides approximately 8000 sqm for use and is located directly at the Danube between the Nibelungen Bridge and Brucknerhaus. The appearance of the building is remarkable for its transparent glass casing, attractively lit at night. There is a café with a viewing terrace on the ground floor.

Opening hours:

daily 10 am to 6 pm

Thursday 10 am to 9 pm

- Nordico

The original monastery house, later Collegium Nordico, was built in 1608, and is used as civic museum since 1973. The alternating exhibitions focus on selected periods of the history of the city, including archeology and regional art. In addition, Nordico is well known for its big nature exhibitions and culture-historical presentations.



Opening hours:

Monday - Friday 9 am to 6 pm

Saturday, Sunday 2 pm to 5 pm

- Provincial Gallery (*Landesgalerie*)



The State Gallery is the specialized scientific institution of Upper Austria for modern and contemporary art and is situated in the main building in the Museumstraße. Its emphasis is 20th century art, contemporary art related to Upper Austria, Austrian art in the international context, interdisciplinary projects and thematically connected exhibition series.

Opening hours:

Tuesday, Wednesday, Thursday, Friday 9 am to 6 pm

Saturday, Sunday, Holidays 10 am to 5 pm

Closed on Monday

d) Other interesting places

- Pöstlingberg and Grotto Railway (*Grottenbahn*)

The *Pöstlingbergbahn*, Europe's steepest tram, carries passengers over a distance of 2.9 km in 16 minutes, with a height difference of 255 m. The Guinness Book of Records confirms that this is a world record.



The historic Pöstlingberg railway carefully modernised and with carriages suitable for handicapped persons, will from the middle of 2009 operate services up the Pöstlingberg from the main square.

Grotto Railway is located in fortifications built by Maximilian d'Este. Riding on the "dragon express", a mini-train in the shape of the mythological beast, the visitor travels through a brightly lit landscape of fairy tale scenes. A 1:7 scale model of the Linz "Hauptplatz" at the turn of the century is situated in the cellar of the citadel's tower. In the side passages, there are three-dimensional depictions of episodes from famous fairy tales.

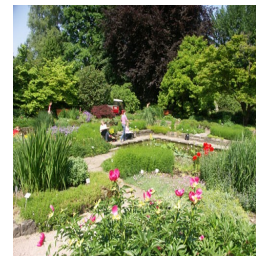


Opening hours:

daily 10 am to 6 pm

- Botanical Garden

The Botanical Garden on the "Gugl" are among the most beautiful in Europe. Over an area of 43,000 sqm, there are more than 10,000 various types of plants to admire. Special shows and exhibitions throughout the year present special attractions.



Opening hours:

daily 7:30 am to 7 pm

- Zoo (*Tiergarten Windflach*)

Over 800 animals await you on your visit to the local and exotic fauna. There are a selected collection of mammals (llamas, pygmy cows, sheep, goats), a variety of birds (parrots, ostriches) and reptiles (crocodiles, iguanas). The zoo is located half-way up the Pöstlingberg.



Opening hours:

daily 9 am to 6 pm